

HAL Art LEAGUE news

HUNTSVILLE

LEAGUE

WHERE LOCAL ART MEETS THE COMMUNITY

DECEMBER/2006

NOTES FROM THE PRESIDENT

by Walt Schumacher

HAL and the Spirit of Giving!

My wife suggested I write about Christmas this time. I said, "like Ho, ho, ho... buy some Christmas presents at HAL?" For that I got "the look."

But I started thinking about it. *Giving* is at the core of the Huntsville Art League. We don't think about it much ... we are busy either making art or teaching it. But we *are* "cultivating local artists and friends of the arts through exhibitions, education, and community outreach." That is straight out of our mission statement.

HAL has been around for 50 years now, nurturing the enjoyment of art in the Tennessee Valley. It was instrumental in the creation of the Huntsville Museum of Art. We've also hosted and helped train many artists in the Tennessee Valley who have "gone on" to be quite successful.

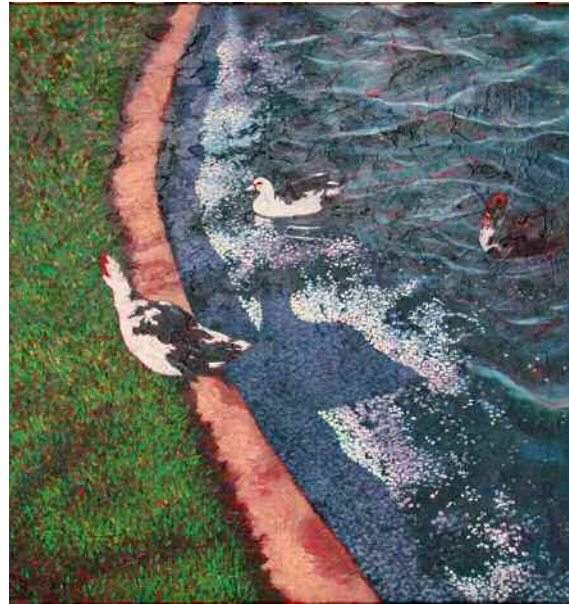
HAL is a "not for profit" organization. That means we operate for the benefit of the community, not for our own profit. You might notice that we frequently partner with other charitable organizations; for example the Huntsville Historic Foundation, and we donate our time and talent for the benefit of local health organizations, through donations of artwork.

The spirit of giving is also essential to our Collector's Draw. HAL is fortunate to be the recipient of wonderful artwork from many artists throughout the Tennessee Valley, not just our exhibitors or members. When our loyal customers buy tickets for this art, they also contribute to HAL. This fundraiser goes a long way toward getting us through the "lean first quarter," so we can continue to provide a home for local art.

So during the Holiday season, yes, we will offer "gift priced" artwork in both our "Boutique" (tree) area, and in the back of HAL, in the "Christmas Sale" area. When

Continued on page 2

December Limelight – Jerry Brown



"Big Spring Ducks 1" and "Fall Franklin Street 1" by Jerry Brown.

impressionist, and has pursued these avenues in his contemporary paintings. He has won many awards, including "Best of Show" at the Madison Art League Show in 2000 and the Monte Sano Art Show in 2005. He has exhibited at many of the

galleries in the Tennessee Valley area and has shown at the Huntsville Art Museum in the Red Clay Survey in 2000, the Unique Views of Huntsville 1 & 2, and the Local Color Show in 2005.

The intent of the current Limelight show, depending on his ability to finish paintings already started, and to hold off selling those finished, is to present a variety of views of Huntsville, including the Big Spring Park, and homes and neighborhoods in the historic districts. Of course there will be the occasional dog or two to fill out the space. Also, for those of you who remember "The Groucho Marx Show," the secret word is "ducks." ☰

Although he had originally planned to become an artist, Jerry graduated from Washington University with an engineering degree. Since moving to Huntsville in 1960, he has stayed in touch with his artistic leanings by studying with local artists such as Jack Dempsey and, since his retirement in 1994, has studied painting at UAH with Mark Marchlinski, Andrew Winn, Blu Smith, and Jill Johnson. Attending the Cape Cod School of Art in 1997 greatly influenced his approach to painting in the Impressionistic style. Jerry has always been attracted to both the French Impressionists and Post-





STAFF

Executive Director/Gallery Director

Annette Tecza

Education Director

Susan Christian

Bookkeeper

Sandy Campbell

GENERAL BOARD

Executive Board

President

Walt Schumacher 457-5586 waltshoe@comcast.net

1st Vice President

Peter Grant 509-0449 pgrant113@aol.com

2nd Vice President (Programs)

Ellen Moran 880-2426 ellen@tinybaubles.biz

Treasurer

Jerry Brown 883-5217 jerrybrown@knology.net

Secretary

Karen Young 837-3867 rogyoung@msn.com

Standing Committees

Facilities, Co-Chairs

Hal Cronkhite 883-0149 hcronkhite@knology.net

Dick Binger 533-3473 dbin5@mac.com

Gallery, Co-Chairs

Linda Morton 721-1601 joe.morton@knology.net

Teresa Reid 881-2638 Hreid2@bellsouth.net

Membership

Walt Schumacher 536-1284 waltshoe@comcast.net

Ad Hoc Committees

Collector's Draw

Janet Schumacher 536-1284, janetschu@yahoo.com

Webmaster

Walt Schumacher 536-1284 waltshoe@comcast.net

Newsletter

Martha J. Montgomery mjmskyjack@aol.com

Susan Steinhauser 489-0660 sksteinhauser@knology.net

Design & Layout: Susan Farrow Graphic Design,
882-3563 susanfarrow@comcast.net

Programs

Ellen Moran 880-2426 ellen@tinybaubles.biz

Special Events

Maria West 883-0374

Patron Recognition

Jane Yu 539-1662 peteryu3@comcast.net

Outside Exhibits

Huntsville Times

Heike Covell 880-9661 Stuttgart80@knology.net

Heritage Club

Dorothy Montgomery 881-9527

you, your friends or family are looking for something truly unique, do think about looking at HAL. They will be getting something that might help develop a little more artistic sensibility, you will be contributing to an organization dedicated to the enlightenment of Huntsville... not just at Christmas, but throughout the year! Best Wishes to you and yours! ☰

FROM THE EXECUTIVE DIRECTOR / GALLERY DIRECTOR

by Annette Tecza

Don't forget to shop at HAL for the holidays! Our artists have been busy and we have many wonderful Christmas gifts for those special loved ones on your list. A gift from HAL is one they will cherish and it will let them know how special they are to you.

The Gallery Tour will be Thurs., Dec. 7 from 5-9 pm. Be sure and stop by to see how wonderful the Gallery looks for the holidays!

Signature Gallery, Artistic Images, the Huntsville Museum of Art, Meridian Arts, Artistic Minds and Café Baba will be open for the tour, too. Our limelight artist, **Jerry Brown**, will be here to meet and greet our guests that evening along with our many, dedicated volunteers.

We'll be closed Christmas & New Year's Day! Have a safe and happy holiday season! ☰

EDUCATION NEWS

by Susan Christian

The Education Department is busily getting our Winter schedule together with some really fun Christmas classes. Our on-going classes will continue in January and February. Please check our website for upcoming classes. Schedules will be mailed out to all our students very soon. Call 534-3860 to sign up for any class over the phone. Happy Holidays to all! ☰

OTHER NEWS

Christmas Special Sales

The Christmas "Boutique" will be on/under the Christmas tree in the front of the gallery. Look for small items (under \$100). The Christmas Sale will be held in the back education room at the Gallery. Items with varying price ranges will be offered by artists at a sale price. Make sure to stop by and see the unique possibilities for your Christmas gift list.

Collector's Draw

As of Nov. 19, we still have about 35 tickets left to be sold. So, tell the neighbors! This is your chance to get some great Tennessee Valley art, valued at \$150 - \$300, for just \$115! The art will go on display right after Christmas. The Reception will take place Jan. 6th (to fill in those post-holiday blahs), and attendees will get to vote for the "People's Choice" award. The draw will take place Sun. afternoon, Jan. 21st. If you haven't been to a draw, it is quite exciting. WHNT's Steve Johnson randomly picks a ticket number. That person has first choice from all the art. Then Steve picks a second number, and that person chooses their favorite art from what's left! This really forces you to rank all the art, so pre-visitation is necessary! Please participate, and thanks for helping us to support Tennessee Valley art.

Harrison Brothers Exhibit

On Oct. 14, many HAL exhibitors turned out for the second annual sidewalk sale in front of Harrison Brothers hardware store. Work from the following artists was exhibited: **Hal Cronkhite, Walt & Janet Schumacher, Kay McWhorter, MJ Montgomery, Dorothy Montgomery, Linda Morton, Sid Brannon, Harriet Dobbins, Anne Southard, Lynne Hartman, Martina Dyer, Heike Covell, Sam Fara, Karen Young, Glennis Black, Jerry Brown, Ed Starnes, Marcia Leonard, and Ellen Moran. Wesley Thomas** and kids were very helpful in the setup process. And a special thanks to **Hal Cronkhite**, who delivered, assembled, tore down, and removed all the racks. Big job! Thanks Hal!

Committee Exhibit

The COMMITTEE, a group of ten HAL artists, is currently showing at the Nativity Church's Banister Gallery, through the end of December.

Exhibitions

Huntsville Times Gallery

Mary Ellen Davidson will not only feature her latest acrylic paintings, but also watercolor and etchings at the Times Gallery during the month of December.

Heritage Club

Exhibiting at the Heritage Club during Dec. and Jan. will be Hal Cronkhite and Mary H. Reed. The exhibit will be ready for viewing on Dec. 5 and the reception is tentatively scheduled for Jan. 9, 2007.

Mr. Cronkhite has lived in Huntsville since 1963. He worked as a software engineer until 1999 when he retired but has always had a strong interest in art. In the 70's he took several sculpture courses in the UAH art department and began painting in 2001 soon after retiring. He has taken painting classes at HAL and is currently studying under Chuck Long. His works in oil include both landscapes and portraits. His interest in the interplay of form, light and color is reflected in his many water scenes.

Mary H. Reed was born and raised in the heart of the American Midwest – her Nebraska upbringing taught her to love and respect the beauty and bounty of nature. Family vacations always revolved around the outdoors with parents who instilled in her and her three brothers admiration of the simple beauty in the world around them.

Art has always been a part of Mary's life, although serious pursuit of oil painting is relatively recent. Throughout her middle- and high-school years, a talent for observation and composition became apparent, and with the support of an artistic family, she was nurtured and supported in pursuing her interests. She remembers the Nebraska winter evenings spent in her warm cocoon of a bedroom, music on the stereo, hard at work at her drawing table.

Mary's formal art education was and continues to be sporadic. "I became aware about a decade ago, that when you are open to others, and the world around you, suddenly you'll find yourself in the presence of one whom you were designed to learn from."



Above, from top, "Biloxi Gourmand" and "Saltwater Fishing Camps" by Hal Cronkhite; "Peaches and Silver" and "September II" by Mary H. Reed.
At right: "Chrysalis" by Kay Basiago.

In 1989, a co-worker challenged Mary to apply for scholarship from the Decatur Art Guild for tuition and expenses to the fine arts program at Calhoun Community College. She was honored (and surprised) to be the recipient. Her artistic vision has also been inspired and supported by others in her life, including Nancy Hughes, a pastel and watercolor artist, who can be credited for inspiring Mary to pursue the unknown. Mary has most recently studied under professional artist Billy Kirk of Booneville, MS, as well as AL A&M art instructor Robert Bean.

In July, '06, Mary was invited to join a group of talented and creative women known as The Committee. Although new to this esteemed group, She found an artistic home where members support and encourage each other to explore and expand the scope and vision of their art.

Mary has received commissions from several collectors and has been included in several juried art shows and exhibits in N. Alabama galleries and museums.

HAL Meeting Speaker

Due to the holidays, there will be no general membership meeting in Dec.

Awards

Terri Shows achieved signature status in the Watercolor Society of Alabama and was also awarded second place in the Alabama Members' Showcase 2006 exhibit for her painting "Another Phenomenal Woman".

Congratulations to Kay Basiago who won a Merit/Cash Award at the Bluff Park Art Show in Hoover, AL, Oct. 7, 2006, for her frameworked glassbead necklace "Chrysalis."

She was also awarded a Merit/Cash Award in the Jewelry Category, for her overall presentation at the Kentucky Festival, in Northport, AL, October 21-22, 2006. She found the validation of her efforts both inspiring and uplifting. ☺



3005 L&N Dr. Ste. 2
 Huntsville, AL 35801
 (256) 534-3860
 www.huntsvilleartleague.org
 email: HAL351@hiway.net
 Mon-Sat 10-6 • Sun 1-4

Where Local Art Meets The Community



HAL General Meeting

There will be no general meeting in Dec.

UPCOMING DATES

Gallery Change-out

The change-out will be on Dec. 26, when we hang the Collector's Draw. Please bring only half of what you normally do!

Figure Drawing Group

Every Mon., 9am-noon • HAL Gallery

Plein Air Group

Call Anne Southard for details, 881-2179

Peer Critique

Every 1st Wed., 7:00 pm, HAL Gallery

Board Meeting

Every 2nd Mon., 11:30 am, HAL Gallery

Standards

2nd Mondays by Appointment.

Call Annette for details, 534-3860

Newsletter Submissions

Please submit articles for next month's issue of the HAL News by the 15th of the month to

Martha Montgomery,

mjmskyjack@aol.com

AND Susan Steinhauser,

sksteinhauser@knology.net

Submit all digital photos to

Susan Steinhauser,

sksteinhauser@knology.net

Send us information on recent acceptances into local/state/regional/national/international juried shows along with any awards/recognition received.

We want to acknowledge your achievements!



HOLIDAY BOUTIQUE



Come to HAL for your Christmas shopping! We have many unique items gift-priced to make quick work of your list! Where else can you find beautiful, unique, yet affordable gifts that say "I care" to your someone special?

Holiday Gallery Tour December 7 5-9 PM

Huntsville Art League, other local galleries, and the Huntsville Museum of Art will be holding a holiday open house. This informal event will display painting, pottery, glass, sculpture, jewelry, photography, and woodworking. Join the fun!

HAL 2006-2007 CALENDAR

December

Limelight: Jerry Brown

Heritage Club: Hal Cronkhite and

Mary H. Reed

Times Gallery: Mary Ellen Davidson

Dec. 7 Gallery Tour 5-9PM

Dec. 26 Collector's Draw art goes on display

January 2007

Jan. 6 Collector's Draw Reception

Jan. 21 Collector's Draw

WELCOME!

New and Renewing Members

Sponsor:

Ann Upchurch

Joy E. Beeson

Mary Champion

Jimmie Dawkins

Sallie and Joe Estes

Sam Fara

John Gattis

Kay Heckman

Rhonda Hockelberg

Rosalie Holt

Marjorie Hughes

Lisa Ingram

Ann Jones

Betty Marsh

Patricia McDonald

Cheryl Melinz

Debi Michetti

New Exhibiting Artists

Judith Fields

Fred McBride

Don't Miss Out!

Please submit address, phone and/or email changes
 to **Walt Schumacher 536-1284** email: **waltshoe@comcast.net**